



**AUTOLOG**<sup>®</sup>  
*Sawmill Automation*

# Trimmer optimizer



## Our Technology

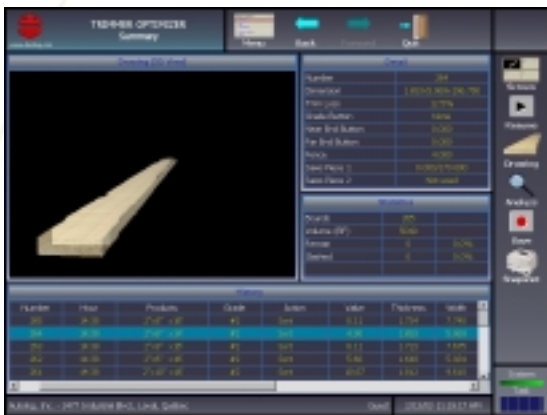
HUNDRED OF OPTIMIZER SYSTEMS  
INSTALLED IN CANADA AND U.S.A.

- Quickest payback in the industry
- 3D - Windows NT<sup>®</sup>, XP<sup>®</sup> Interface
- Real time / real shape solutions
- Custom-built solution depending on mechanical configuration
- On-Line Simulation

### ● SENSORS

- 4-inch (M6) or 1-inch (M24) profiles spacing (Dynavision® laser sensors)
- Operation speed up to 180 pieces/minute
- Thickness accuracy  $\pm 0.010$  inch
- Width accuracy  $\pm 1/32$  inch
- Length accuracy  $\pm 1/2$  inch

® Registered Trade Mark of LMI Inc.



### ● OPTIMIZATION

- Real-time optimization according to product price and mill configuration
- Product definition by thickness, width, length, grade, composite wane rules and price
- Configurable wane and skip
- Three optimization modes (unit price, MBF price, volume)
- Individual solution computed in real-time

### ● PARAMETERS

- Parameter modification and saving during production
- Automatic parameter validation
- Multiple-product database

### ● SIMULATOR

- Simulator included
- Production data stored for simulation

### ● USER INTERFACE

- Autolog graphic user interface
- 2D and 3D views of board solution
- Controller, optimizer, simulator and report manager accessible from main menu
- All systems in the mill accessible from one remote station (via network)
- Service provided through modem for all computers

### ● REPORTS

- Report manager for shift, weekly, monthly and annual reports, report archiving
- Production downtime reports with comments
- Configurable, exportable and compatible production reports with database (Access, Excel, Lotus)

After-sale service 24 hours/day, 7 days/week.

450 434-8389



Autolog, Production Management Inc.  
 1240, Michèle-Bohec, Blainville (Quebec) Canada J7C 5S4  
 Telephone : 450 434-8389 Fax : 450 434-8395  
 E-Mail: [info@autolog.com](mailto:info@autolog.com) Web Site: [www.autolog.com](http://www.autolog.com)