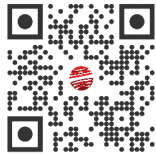


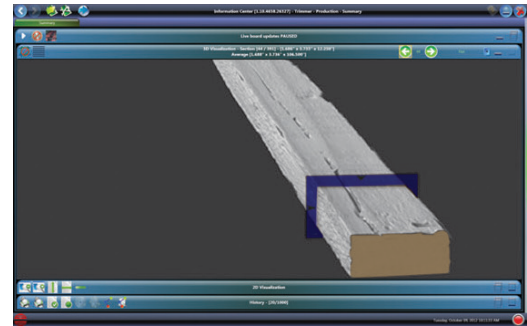


Scan QR code & visit
www.autolog.com



Transverse Optimizers (Bull/Gang Edger, Board Edger & Trimmer)

Highest precision level and reliability in the industry with a 1/4" scan density.



TECHNOLOGY. QUALITY. CUSTOMER EXPERIENCE.

TRANSVERSE OPTIMIZER

BULL/GANG EDGER • BOARD EDGER • TRIMMER



MODULAR FRAME

Significantly reduces project cost.

- Easy and cost efficient installation on site, by section
- Eliminates the need to open the roof and rent a crane
- Allows assembly directly around the chain races already in place
- Frame can be pre-designed and built according to substructures' existing footprint
- Electronic cabinet and HD monitor (as an option on the frame) for the Trimmer & Edger

3D SENSORS POSITIONED AT AN ANGLE (22° to 45°)

Best scan profile on all 4 faces of the board or cant.

- Dual profile board scanner designed for the harsh sawmill environment
- Higher width resolution and better steep edge wane detection, especially for timber
- Reliable 1/4" density, 3,000 scans per second
- Encoder signals are simultaneously distributed to all heads
- High ambient light immunity
- Safe visible class II lasers
- Sensors covered by a 2-year warranty
- Increased up-time due to less maintenance (no air line required for cleaning sensors @ 45° angle, lower scan heads are mounted outside of path of falling debris and dust)
- Wane, skip, warp, bevel and side holes detection
- Geometric cavity detection such as splits and shakes and unsound wood
 - Increases wet chips revenue vs. dry chips
 - Reduces unnecessary drying costs
 - Improves planer performance by reducing stoppage
- Classification of the reverse face for appearance grading
- Possibility to configure two sets of parameters per grade (high & low qualities)
- Supports curve sawing systems (Bull/Gang Edger)
- Notification and raid system available for data capacity and redundancy
- Recirculation reduction system available to eliminate pieces circulating between the Trimmer and Edger

USER INTERFACE

User friendly and easy to adopt system, enabling operators to quickly and efficiently master its features.

- High definition, browser-like user interface allowing multiple screens across all systems and flexible, per-user customization
- Powerful tools for geometric and defects visualization
- Quickly add products, adjust grading parameters and manage production data
- Capture boards which can be used for simulation with configurable filters
- Complete log journal of user activity and parameter changes
- Seamlessly integrated document viewer for archiving, exporting, reporting and printing in most popular formats (XLS, PDF, etc.)
- Archive and save parameters manually and automatically for easy restoration
- System-wide, centralized logs, alarms and status information for increased serviceability, production and quality management
- Advanced QC and board analysis tools allowing, amongst other features, independent “why” and “what if” analysis scenarios per board
- Autolog uses best-in-class Allen-Bradley® ControlLogix® PLC units for all its control applications

TECHNOLOGY. QUALITY. CUSTOMER EXPERIENCE.

450.434.8389 • info@autolog.com • WWW.AUTOLOG.COM

1240, Michèle-Bohec
Blainville (Qc) J7C 5S4 Canada

*Trademark Autolog, Production Management Inc.
Printed in Canada, September 2017

